

ECONOMIC CONDITIONS FOR U.S. RICE PRODUCERS

Elevated cost of production and depressed prices from cheap foreign rice have led to a challenging outlook for the U.S. rice industry.

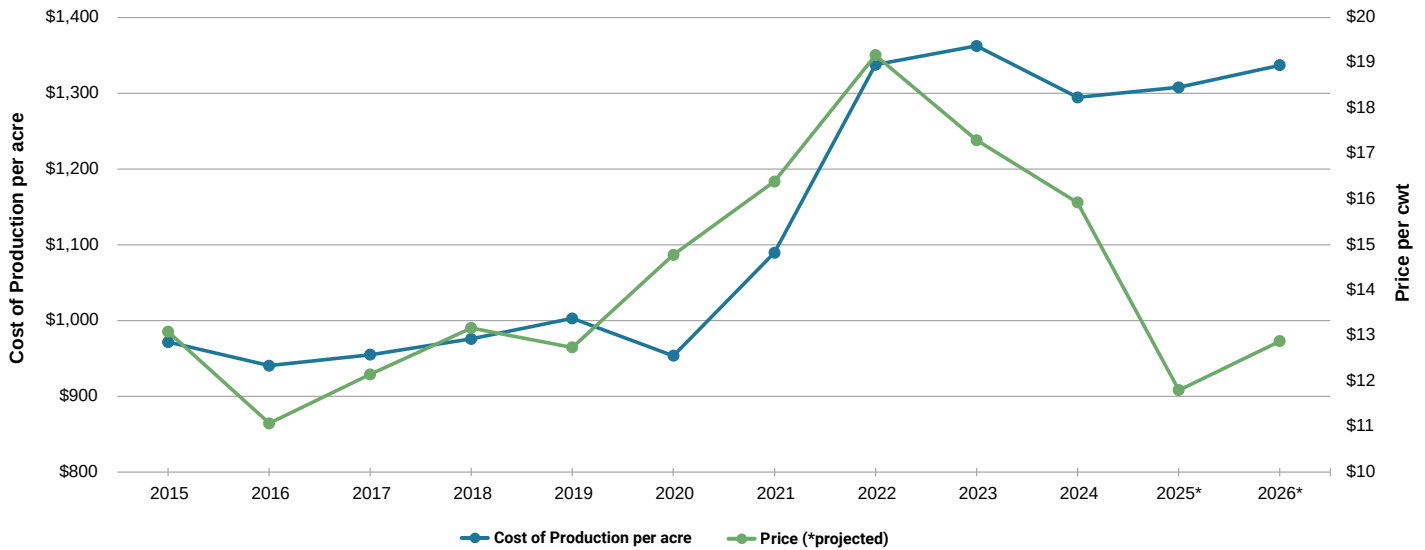
- Rice producers are projected to lose more than \$417 per acre in 2025, or nearly \$285 per acre when factoring in the FBA Program.
- Cost of production for rice farmers has ticked up again from last year, nearing the peak per-acre rate of \$1,362.32 set in 2023.
- Rice imports are on track to break existing records and will displace over \$1.5 billion in domestic rice sales.



It is imperative that Congress work to enact an additional layer of economic support to ensure farmers can put a crop in the ground and realize the improvements made to ARC and PLC, which will come into effect in the fall of 2026.

COST OF U.S. RICE PRODUCTION & PRICE¹

Rice production costs began rising sharply in 2021 and remain elevated today. Meanwhile, rice prices have declined since 2022 and are now back to levels last seen in 2019.



2025 PROJECTION²

	Cost of Production	WASDE Price	WASDE Yield	Per Acre Revenue	Per Acre Profit
Rice	\$ 1,307.68	\$ 0.118	7,544	\$ 890.19	\$ (417.49)
Peanuts	\$ 1,165.50	\$ 0.25	3,767	\$ 941.75	\$ (223.75)
Cotton	\$ 943.28	\$ 0.61	856	\$ 522.16	\$ (421.12)
Corn	\$ 889.88	\$ 4.10	186.50	\$ 764.65	\$ (125.23)
Soybeans	\$ 658.06	\$ 10.20	53	\$ 540.60	\$ (117.46)
Sorghum	\$ 443.19	\$ 3.70	72.60	\$ 268.62	\$ (174.57)
Wheat	\$ 395.90	\$ 4.90	53.30	\$ 261.17	\$ (134.73)

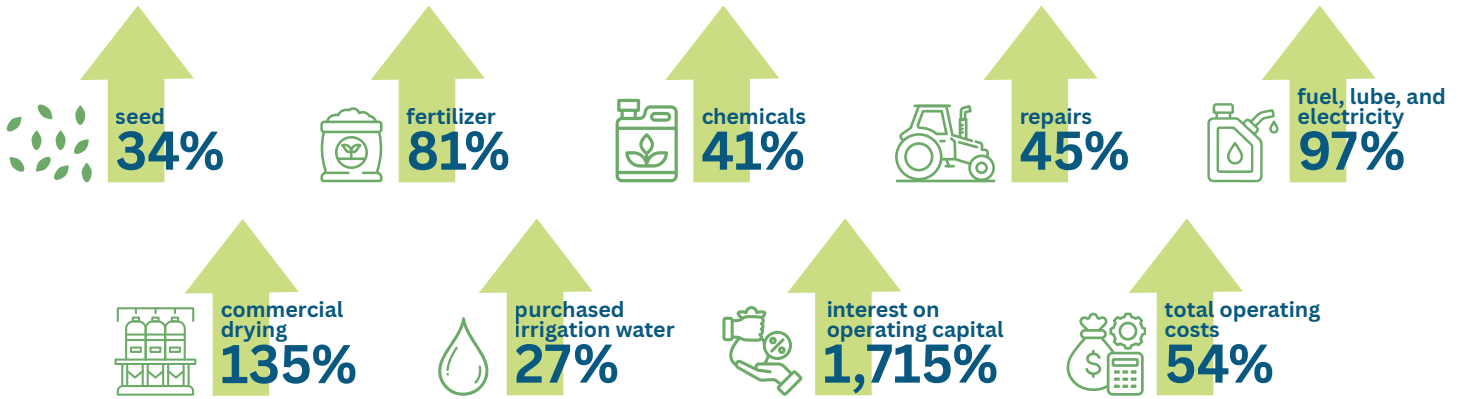
Rice producers are projected to **lose more than \$417** per acre in 2025.

Even when factoring in the **FBA Program**, rice producers are projected to **lose more than \$285** per acre in 2025.

ECONOMIC CONDITIONS FOR U.S. RICE PRODUCERS

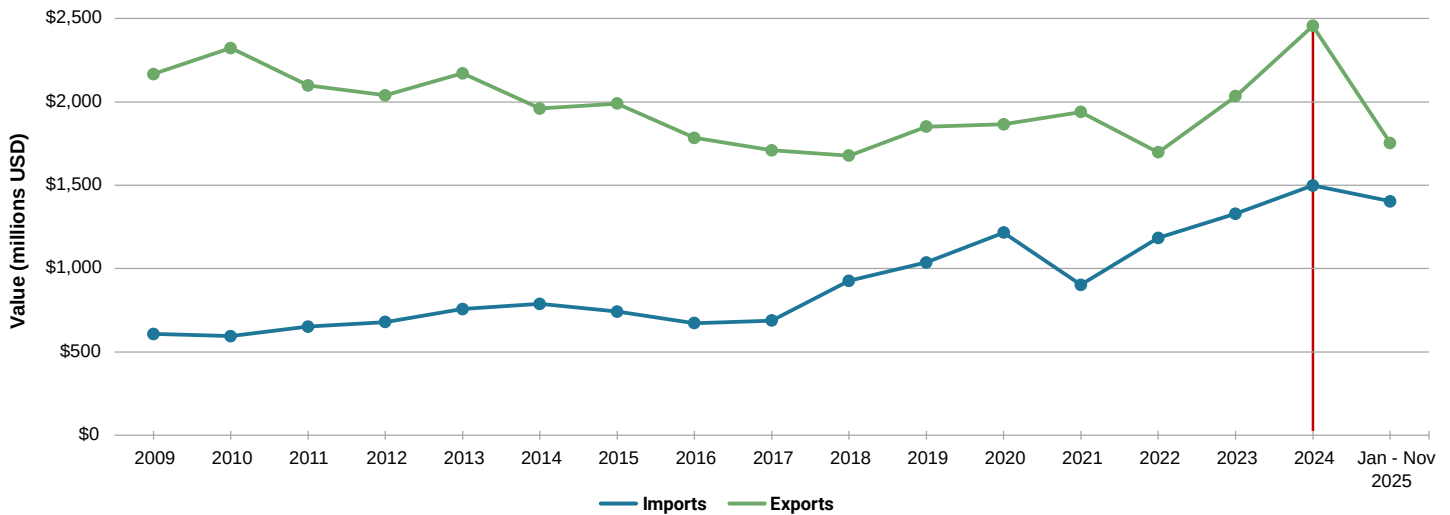
U.S. RICE PRODUCTION COST INCREASES (2020-2024)³

From seed to fuel to financing, the overall cost of producing rice has climbed steeply since 2020.



U.S. RICE EXPORTS VS. FOREIGN RICE IMPORTS⁴

While 2024 is the most recent full year of data, 2025 year-to-date imports are on pace to set new records and could displace more than \$1.5 billion in domestic rice sales.



¹ U.S. Department of Agriculture, Economic Research Service. Recent Cost and Returns data. U.S. Department of Agriculture, World Agricultural Supply and Demand Estimates. (January 2026) FAPRI Baseline Review, Preliminary U.S. Crops and Biofuels Tables.

² U.S. Department of Agriculture, Economic Research Service. Cost-of-Production Forecast data. U.S. Department of Agriculture, World Agricultural Supply and Demand Estimates. (January 2026)

³ U.S. Department of Agriculture, Economic Research Service. Recent Cost and Returns data.

⁴ U.S. Census Bureau Trade Data