



CALIFORNIA RICE FOOTPRINT

Rice Footprint Initiative

- Anchored by UC Davis report
- How many acres of rice to...
 - Support our communities
 - Support the environment

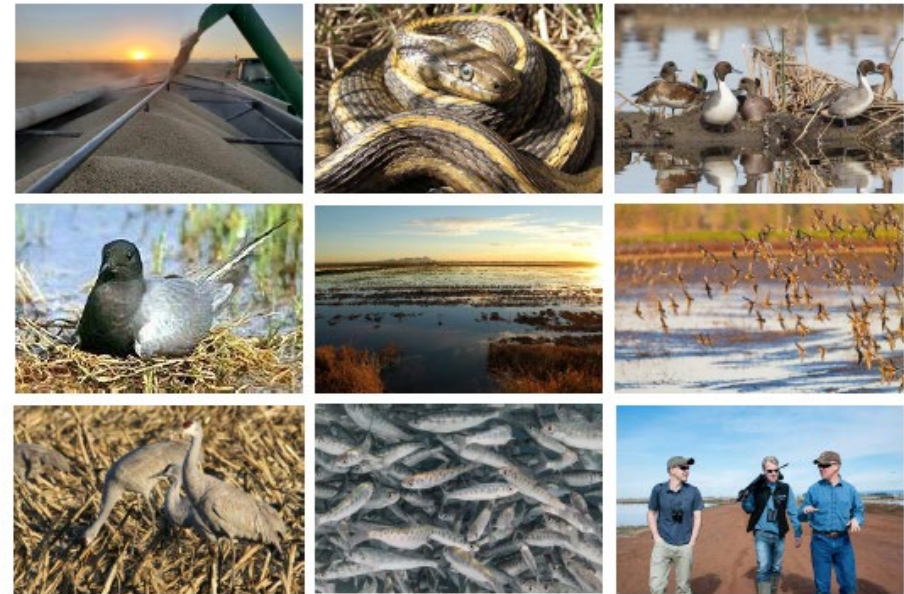


The Report

“Unquestionably, rice agriculture plays a significant role in providing food resources and wildlife habitat to many species of California native birds, reptiles, amphibians, and fishes.”

A Conservation Footprint for California Rice

Acres, locations, and management practices of ricelands to support multiple species of wildlife in the Central Valley, California



Report to the California Rice Commission

January 2025

John M. Eadie and Daniel S. Karp (editors)

A partnership of the University of California Davis and Point Blue Conservation Science

Communities

\$1 billion and 10,700 jobs

“This income generates economic activity in many other industries such as local retail stores, schools and local services.”



Waterfowl

500,000 acres

258,000 acres winter-flooded

“Rice fields provide a unique
habitat for waterfowl...”

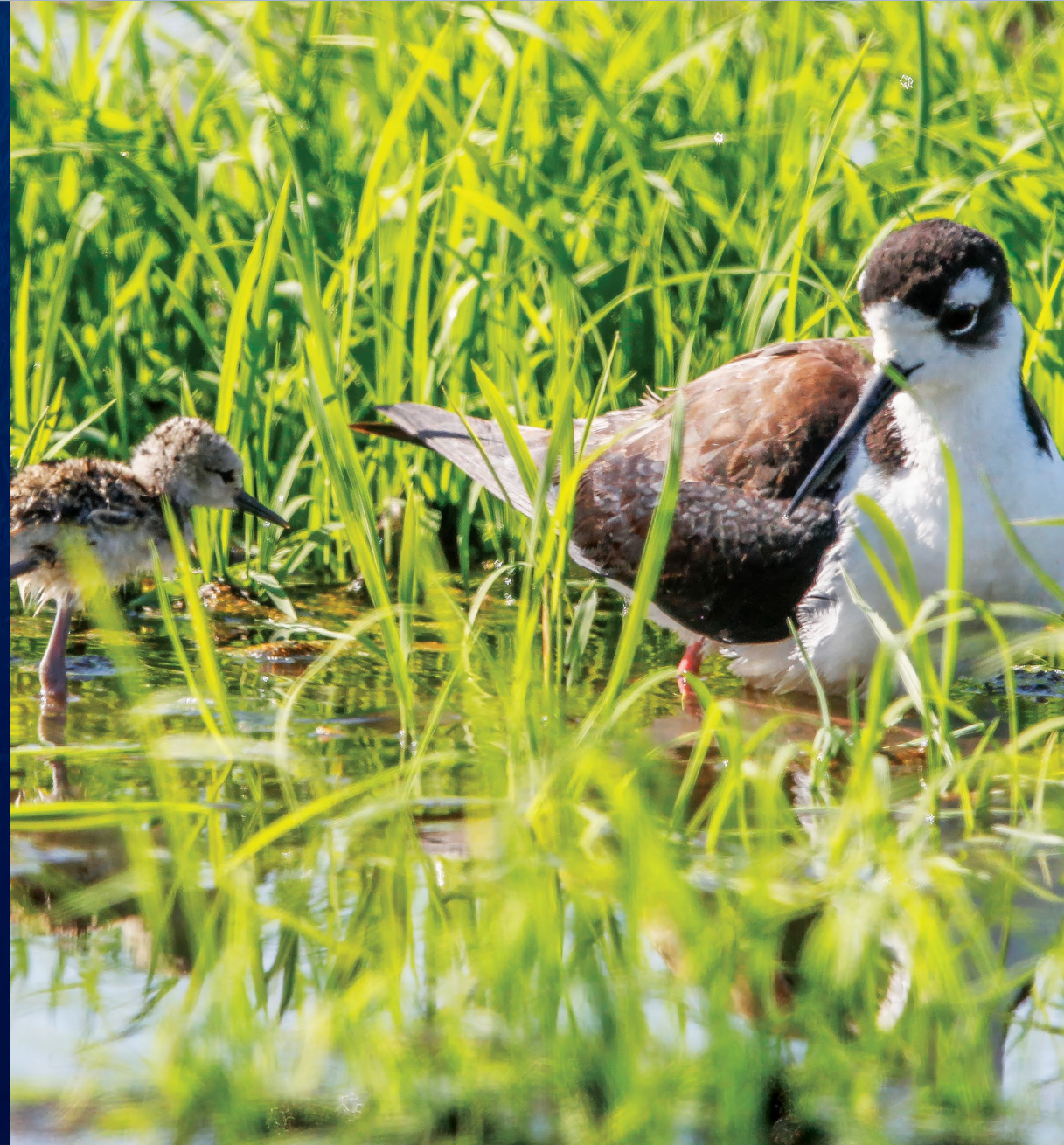


Shorebirds

472,000 acres

373,000 acres winter-flooded

“...nearly 100% of Central Valley breeding
habitat for Black Terns...”



Salmon

30,000 acres bypass

200k-300k acres fish food

“The footprint of bypass rice fields needed for salmon, quite simply, all of it.”



Giant Gartersnake

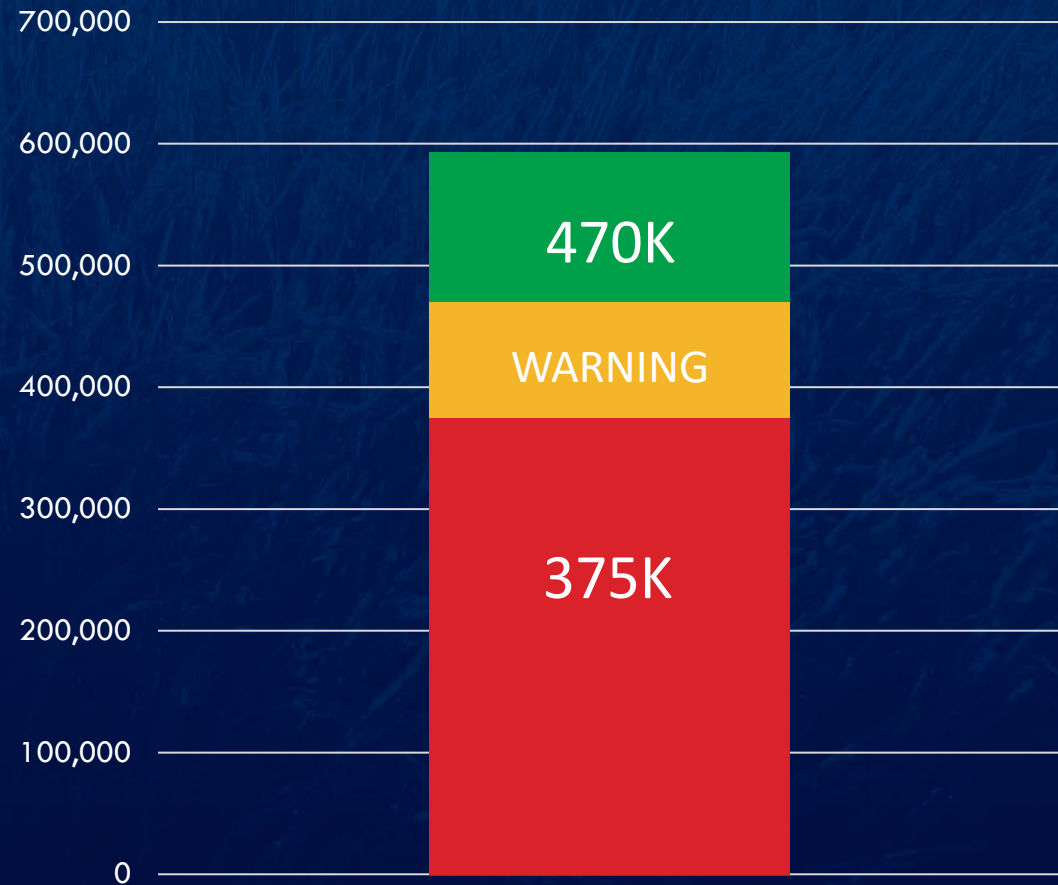
83,000 acres

“...rice fields have become critical
surrogate habitat that mimics the
historical habitat...”

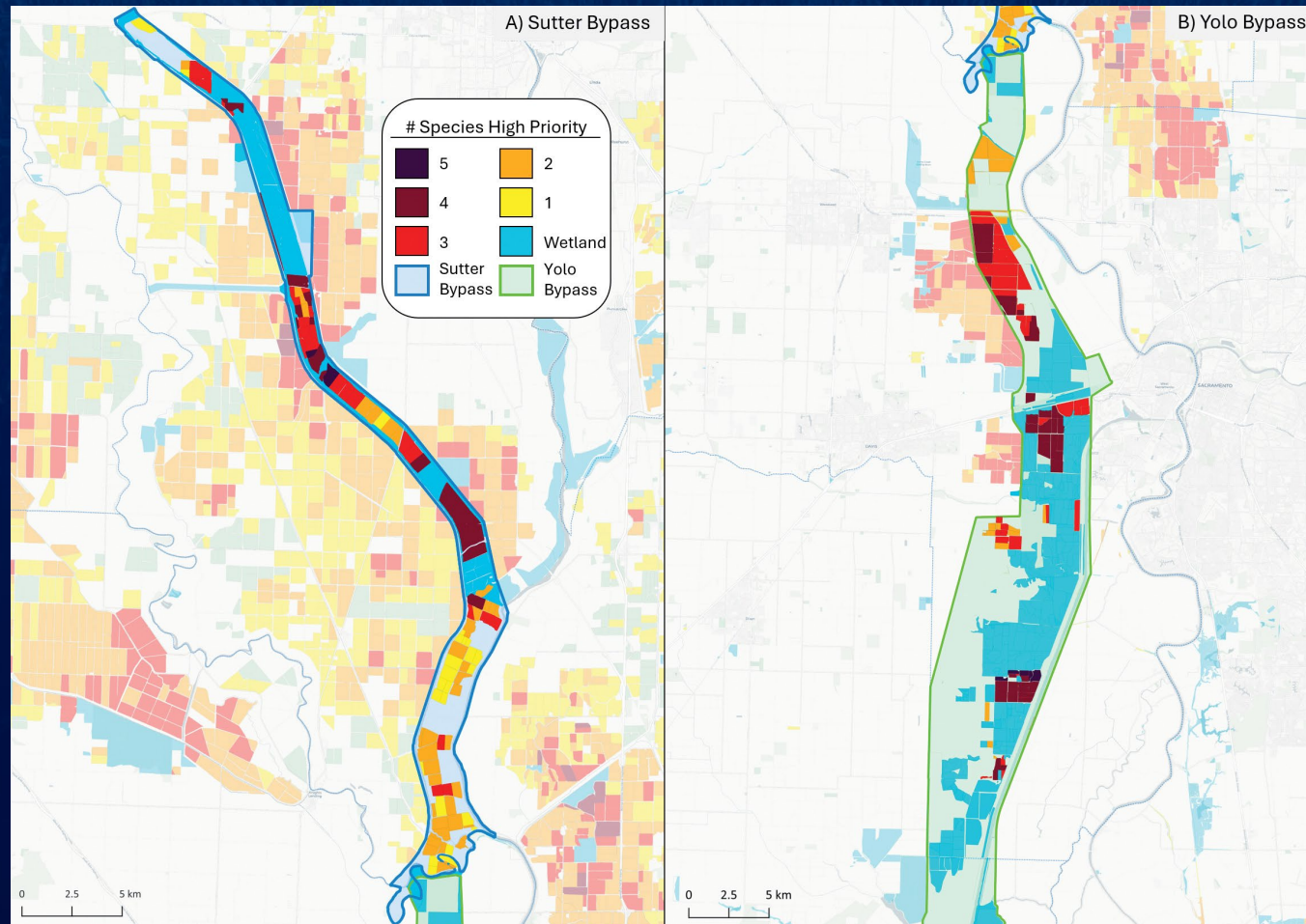


Critical Acres

- 470,000 acres+: **SUFFICIENT**
- 375,000 acres: **CRITICAL**
- 375,000 – 470,000 acres:
Inadequate: **WARNING**



Species Overlay on Ricelands



What's next?

Protect and enhance

- Permanent easements
- Short term easements (contracts)
- Salmon Regional Conservation Partnership Program
- GGS science and programs
- CA policy
- Footprint 2.0

